

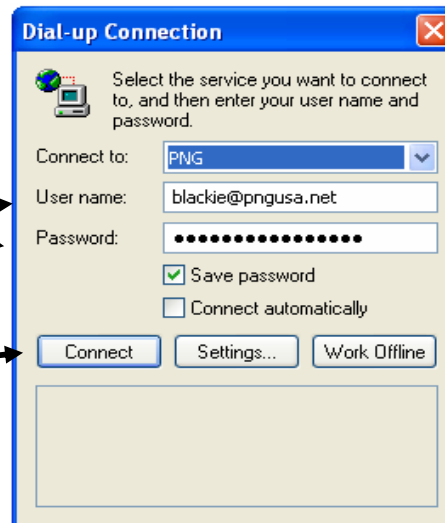
INTERNET ACCESS with pngusa.net

To CONNECT to the Internet

- 1 Click the **Internet Connection** icon on the Desktop



- 2 Make sure that your **User Name** and **Password** appear here
Enter them if needed, but if they are already there, then just go to step 3



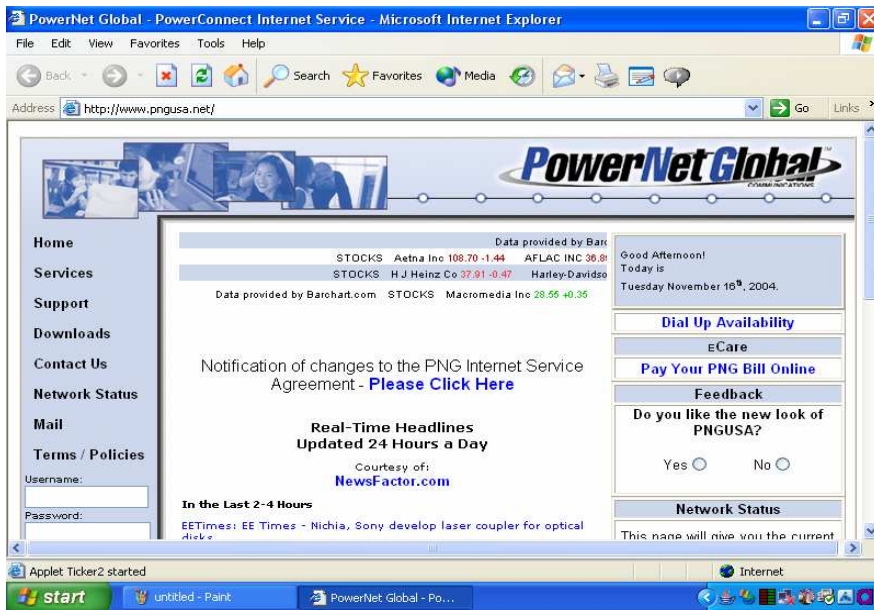
- 3 Click the **Connect** button

At this point you are "connected" to the Internet, even though you do not see the Internet yet. To "see" the Internet, you must launch your "browser" (Internet Explorer)

- 4 Click on the **Internet Explorer** icon on the Desktop



(After launching **Internet Explorer** , you will see your Home Page :)



To DISCONNECT from the Internet

- 1 Click the Red X () in the top right corner

(The Browser will now be closed, but you will still be "connected" to the Internet.)

- 2 Click the **Internet Connection** icon on the Desktop



- 3 Click the **Disconnect** Button

(You are now disconnected from the Internet)

