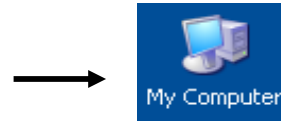


Burning CDs (General Info)

"Burning" your own CDs is an excellent way of backing up your computer's data. It is also an excellent way of protecting your software investment, by making a "back up" of your program CDs.

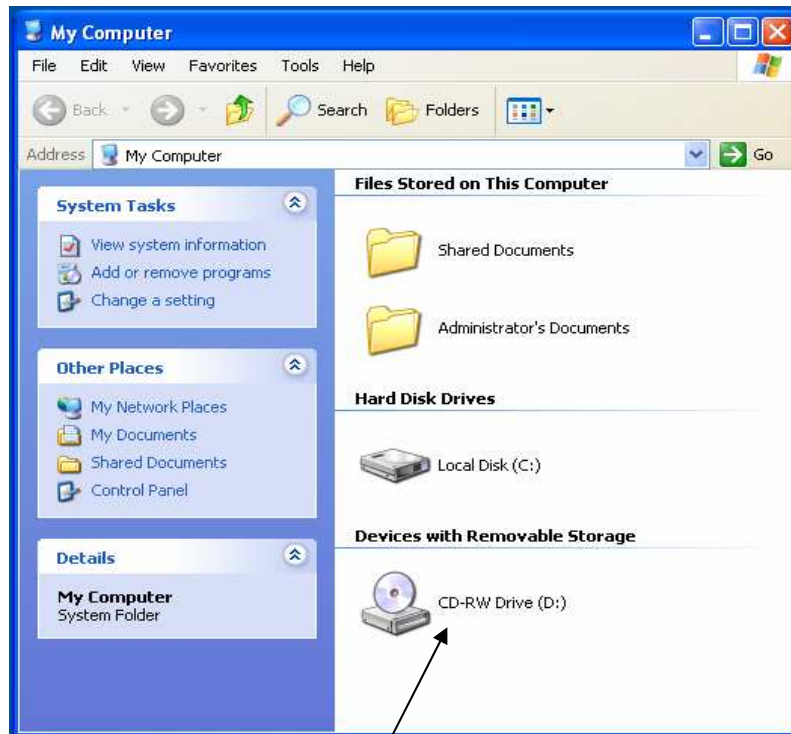
To burn a CD, you must have a CD **drive** capable of writing (not just reading) data, and a CD burning program.

To determine what kind of CD or DVD drive you have, click on the **"My Computer"** icon, on the Desktop,



or click on the  button, then 

The following screen will then appear, listing all of your computer's drives :



The CD and DVD drives will be listed in the section for **"Devices with Removable Storage"**. There will be a separate listing and icon for each (one or more) drive in your computer

Type of Drive

Capability / Use

CD-ROM

"ROM" indicates "Read Only Memory". It "reads" CDs only, and can **NOT** record

CD-R

"R" indicates "Recordable". This drive can both read and record (burn) to a CD.

CD-RW

"RW" indicates "Re-Writable" This drive can both read and record (burn) to a CD. If you use a special CD-**RW** blank disk, it can record over the same disk more than once.

DVD-ROM

Can "read" a DVD *or* CD , but not record.

DVD-RW

Can both read and record (multiple times)

DVD/CD-R

Combination drive that reads (does not write) DVDs, and both reads and writes CDs

DVD / CD-RW

Combination drive that reads (does not write) DVDs, and both reads and writes CDs (multiple times when using a CD-RW blank)

DVD-R

Can both read AND record, on both DVD and CD blanks

DVD-RW

Can both read AND record, on both DVD and CD blanks (multiple times if RW blanks are used)

DVD-R / CD-RW

Can read and record to DVD (but only once) and can read and record to CD (multiple times if RW blank disc is used)

When purchasing "blank" discs, be sure to get the correct kind. "-R" discs can only be recorded on once, while "-RW" discs can be re-used (erased and recorded over multiple times). But "-RW" blank discs are more expensive, and most people rarely need to re-record over a disc anyway.

To use a CD-RW blank disc, you must also have a CD-RW drive. A CD-R drive can NOT record onto a blank CD-RW disc. However, a CD-RW drive IS capable of recording onto either a blank CD-R disc or a blank CD-RW disc. The same is true for DVD drives.

Also remember that a CD-R or CD-RW drive can NOT record onto a blank DVD disk. A combination drive however, "may" be able to use either type of blank.

The most economical and practical recommendation would be to purchase either CD-R or DVD-R blank discs (depending on which kind of drive that you have).